

I- Spy on Exmoor

An amateur's best effort - please let me know of any inaccuracies.

A. Mammals

1. Stag left and doe right - score 20 for stag and 10 for doe



3. Exmoor Pony score 5



4. Exmoor horn sheep score 10



5. Long horn Cattle score 5



6 Slow worm pictured near Badgworthy water - score 20



B. Birds

1. Buzzard - score 10. Fairly common on Exmoor they have a distinctive mewling cry. Sometimes see them from Greenslades.



2. Peregrine falcon - score 20. Seen on the sea cliffs at places like Hurlestone Point.



3. Dipper - score 10 . often seen all year round on a rock beside water dipping up and down. It also wades into water to catch food



4. Pheasant - score 5



Native to Asia but introduced to Europe by the Romans they have now settled well on Exmoor can be seen all year. There are a number of shoots on the moor.

5. Yellow Hammer score 10. Seen all year on moorland and woodland - eats seeds. Well known call sounds like "Little bit of bread with no cheese"



6. Tree Creeper (left)- can be seen on the ford near Greenslades. Known locally as a tree mouse as it scurries up and around trees. Collective noun is a spiral because of how it moves up a tree then flies on. If you see a bird coming down the tree it is almost certainly a nuthatch (right hand picture). Score 20 for either



C Butterflies - view one or two on sunny days from January then in April then there are lots to see <https://butterfly-conservation.org/sites/default/files/butterflies-of-exmoor-leaflet.pdf>

1. Orange tip. Spot one between April and June score 5

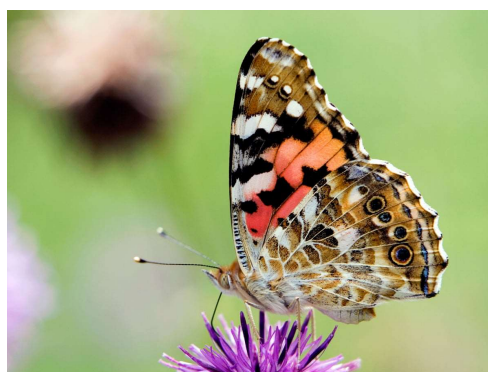
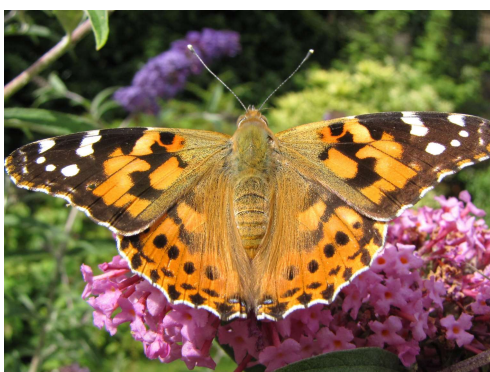


2. Small white score 5



3. Painted lady. score 5

Sometimes called thistle butterfly (because they are its favourite food) and sometimes cosmopolitan butterfly because of its global distribution (though there are none in Australia or Antarctica). They can fly up to nearly 30mph.



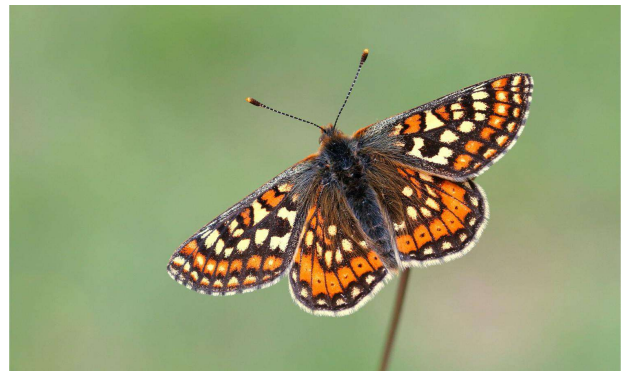
4. Fritillary Score 5 for any fritillary and 20 for the marsh or high brown or small pearl bordered fritillary.

The Heath Fritillary is one of the UK's rarest and most threatened butterflies and is restricted to just four locations in the UK one of which is Exmoor. Was called the 'Woodman's Follower' as it is linked to the traditional coppice management of woodlands, following the cycle of cutting around a wood.



Small pearl bordered fritillary

Marsh fritillary



High brown fritillary found at Heddon Mouth



5. Gatekeeper (left) and heath fritillary (right) pictured near Selworthy.



D Wild Flowers

1. Bell Heather - See all year but pink/purple flowers appear July to Sept
score 5



2. Common heather or Ling Flowers August to October score 5



3. Whortleberry or bilberry (left) - berries appear end of July/August score 5.
Rosebay willow-herb or fireweed (right) flowers June to September. Rare until the 19th century it is now widespread. Score 5



4. Tormentil yellow flowers seen from May to September score 5



5. Foxglove flowers pictured near Winsford June to September Score 5



6. Snowdrops. End of January/February. Do visit Snowdrop valley near Wheddon Cross- you can look up the opening times on the web. Score 5



7. Primroses (on left of first picture and right hand picture with long thin oval leaves, may flower as early as December and continue until May) and wood anemones (on right of picture below white 6 petals found between March and May) Pictured on Exmoor near Timberscombe. score 5 each.



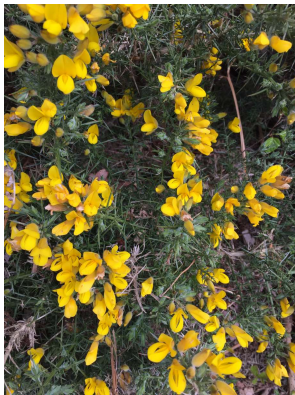
8. Cowslips and Oxslips flower in March and April. Cowslip pictured on left below. Oxslips (on right) tend to be paler than cowslips and their flowers are more open. A bit similar to the primrose above. Score 10 each



9. Stitchwort (left) pictured near Luccombe. This flowers between April and June. Score 5. Violet (right) pictured on the same walk in April. Score 5 each



10. Gorse (left) pictured on Dunkery . This flowers all year round. As my mother-in-law liked to say love abounds when the gorse is in flower! Wild honeysuckle (right) pictured near Brendon in July Score 5 for each



11. Early purple orchid (left) and spotted orchid (middle) and right - score 20 each

